

CAATE Update



Paula Sammarone Turocy, EdD, ATC
Chair



- **March 2006** - Office established in Round Rock, Texas
- **June 2006** - Separated formally and amicably from CAAHEP
- **June 2006** – Implemented new Site Visitor Procedures and Training



- **July 2006** - Changed name of corporation to CAATE July 2006
- **July 2006** – Implementation of CAATE Standards
- **July 2006** – Final comprehensive (Spring '06 site visits) accreditation actions using CAAHEP Standards



- **Summer/Fall 2006** – Finalized new structures and functions of CAATE
- **Annual Reports 2006** – Final reviews using CAAHEP Standards
- **Fall 2006** – First comprehensive reviews using CAATE Standards

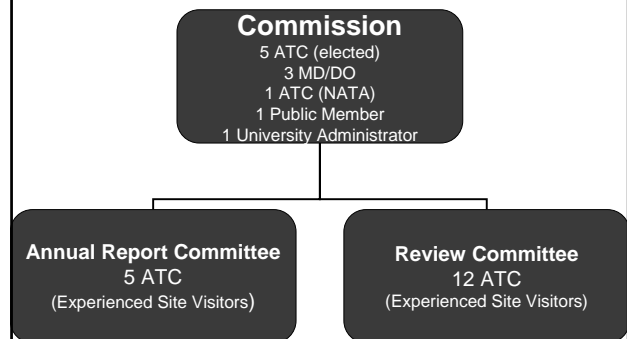


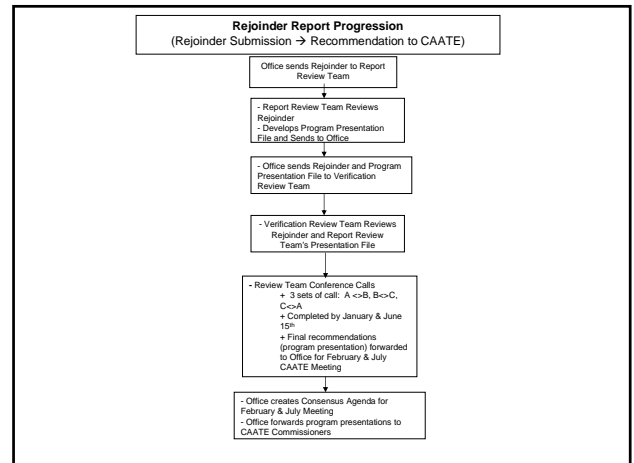
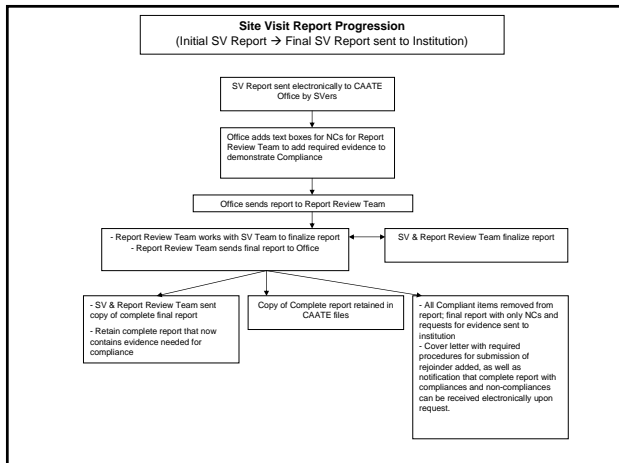
- **352 Accredited Programs**
- **7-9 institutions seeking initial Accreditation**
- **5 Programs seeking voluntary withdrawal of accreditation; 2 of these close in 2007**
(updated 1-23-07)


CAATE Commission

- Annual Report Committee**
- Review Committee**
- Standing Committees**
 - Site Visitor Committee
 - Ethics Committee
 - Finance Committee
 - Technology Committee

CAATE Accreditation Structure








Commission on Accreditation
of Athletic Training Education


- **CAATE Update** is an official communication from the CAATE and contains relevant and binding clarifications of current Standards and CAATE functions
 - FYI: Administrators also getting the CAATE Update



Commission on Accreditation
of Athletic Training Education


- **CAATE Website** is updated on a regular basis and should be used to find all appropriate reference materials needed for accreditation purposes.
 - Refresh screen with each access.

****NOTE:** As requested previously, please check your institution's data for accuracy on Program Search link – contact office to make changes.



Commission on Accreditation
of Athletic Training Education

- **Three positions on Review Committee** available for the 2007-08 accreditation cycle. Current Committee members approached first; replacements will be sought for Committees. More info to come in CAATE Update
- Still seeking **Public Member** for Commission **AND** individuals to participate on a **CAATE Technology Committee**
- **CAATE Executive Director** position development and search process to begin



Commission on Accreditation
of Athletic Training Education

- **CAATE Response to Questions**
 - Questions must be **submitted to the CAATE Office by the 1st of each month.**
 - Procedural Questions – Office may respond
 - Standards Questions – Reviewed by Commission
 - Official responses provided to institutions following monthly conference calls; general clarification affecting others placed in Update
 - Only those "Official" accreditation policy/responses generated by the CAATE are binding.



● Major vs. Degree

- Explanation in Fall 2006 CAATE Update
- As a result of Site Visits and future Annual Reports
 - **Athletic Training must be listed as an academic major** verifiable on the institution's website and in all university/college publications
 - **Programs that do not have a major**, as defined by the Standards, will be cited as non-compliant and placed on probation until compliance is documented.
 - *Programs currently transitioning to an academic major must be able to provide documentation to the CAATE demonstrating progress toward a major as stated in the Standards to avoid a change in accreditation status.*



● Athletic Training Degree (2014-2015)

- CAATE participated in the NATA Degree Task force and endorses its recommendations
- Degree **must include the title of Athletic Training**; however, each institution may determine the type of degree awarded (e.g. Bachelor of Athletic Training, Bachelor of Science in Athletic Training)
- Athletic Training **degree may not be dually-tagged** with any other professional academic program unless this dual-tagged degree option is consistent with institutional policy/procedure **and** with all other allied health disciplines at the institution (e.g. Nursing, Physical Therapy)



● 4th Edition of NATA Competencies

- CAATE finalizing Self-Study Section D Tables, working closely with the NATA PEC, to be consistent with 4th Edition of NATA Competencies; all other tables will remain the same.
 - 2007-08 Accreditation Reviews may utilize either 3rd or 4th edition Competencies (and associated matrices); however, must use current Self-Study Tables
 - 2008-09 Self-Studies will utilize "new"/revised Section D Tables; will be available Spring 2007.



● Sabbatical and Temporary Leave by PD

- **Sabbatical/temporary leave** means that the Program Director no longer has (B1.25) "recognizable institutional responsibility or oversight for the day-to-day operation, coordination, supervision, and evaluation of all components of the ATEP" during the time of sabbatical.
- Program Director **sabbatical must be reported** to the CAATE and a **qualified replacement must be identified**. (See CAATE Website – Change of PD)



● Use of CAATE-Accreditation Logo

- A **CAATE-Accredited Program Logo** has been developed for use by accredited programs.
- The logo and the policy for its use are now available on the CAATE website (www.caate.net).
- **The CAATE Logo, seen at top of this slide presentation, is NOT to be used by any individual or entity except those approved by the CAATE.**



● Site Visit and Video Policy

All on-campus clinical sites must be visited during a site visit, as well as all off-campus sites with the following exclusions and exceptions:

- If the ATEP utilizes more than six clinical instruction sites, the ATEP must video all off-campus sites. Site Visit Team selects six sites to be visited during the actual site visit.
- All clinical instruction sites classified as providing **ONLY** general medical clinical experiences must either be videoed or ATEP must provide documentation of the facilities current JCAHO accreditation in lieu of videotaping.
- General Medical sites will not be visited during Site Visit



● **Scheduling of Site Visits in the Future**

- **Earlier the better during each semester**
 - Will improve timing of request for rejoinder
- Upcoming years (e.g. 2008-09) there will be ~90 site visits, so **may need to begin assigning academic semester of visit**

Thank You!!

Commission on Accreditation of Athletic Training Education

2201 Double Creek Drive
Suite 5006
Round Rock, TX 78664
caate@sbcglobal.net
www.caate.net